

A swinging bird for childrens fake

H. SOKAL

Lead sheet for "A swinging bird for childrens fake" by H. Sokal. The sheet is in 4/4 time and consists of seven systems of piano accompaniment. Each system has a treble and bass staff. The first system has a repeat sign and four measures of Fm7. The second system has a repeat sign, four measures of Fm7, and a second ending with a Bb7. The third system is marked 'A' and has five measures with chords EbΔ, D0, G7/9, Cm7, G7, Fm7, and F7. The fourth system has four measures with chords Bb7/13, Bb7/13, EbΔ, and B7. The fifth system has four measures with chords EΔ, D#0, G#7/9, Cm7, Ab7, F#m7, and F#7. The sixth system has four measures with chords B7/13, B7/13, EΔ, and Bb7. The seventh system has four measures with chords EbΔ, D0, G7/9, Cm7, G7, Fm7, and F7. There are handwritten annotations: a circled '94' and a 'a' at the bottom center.

First system of piano accompaniment. Chords: $Bb^{7/13}$, $Bb^{7/13}$, $Eb\Delta$, Bb^7 .

Second system of piano accompaniment. A boxed section labeled 'B' is present.

Third system of piano accompaniment. Ends with the word 'FINE'.

SOLOS

First solo line. Handwritten notes include 'A', 'B', and '2. pm 7 6 7'. Chords: $Eb\Delta$, D^7 , G^7 , Cm^7 , Fm^7 , $Bb^{7/13}$, $Bb^{7/13}$, $Eb\Delta$, Bb^7 .

Second solo line. Handwritten notes include 'B', 'A', and 'B'. Chords: $Bb^{7/13}$, $Eb\Delta$, A^7 , A^7 , D^7 , $F\Delta$, Fm^7 , Bb^7 .

Third solo line. Handwritten notes include 'A', 'A', 'B', 'A', and 'Solo Form'. Chords: $Eb\Delta$, D^7 , G^7 , Cm^7 , Fm^7 , $Bb^{7/13}$, $Bb^{7/13}$, $Eb\Delta$, Bb^7 .

Interlude

Interlude piano accompaniment. A diagonal line is drawn across the system.

pick up for next solist

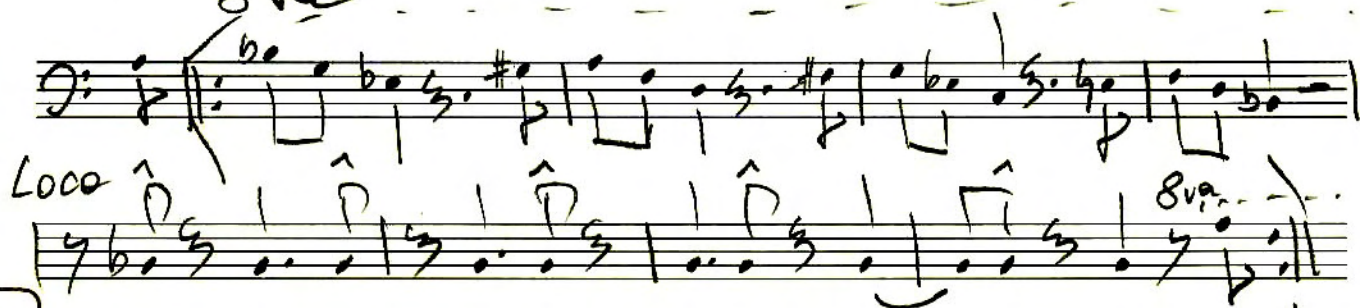
Final piano accompaniment system. A diagonal line is drawn across the system.

After last Solo Dal al fine

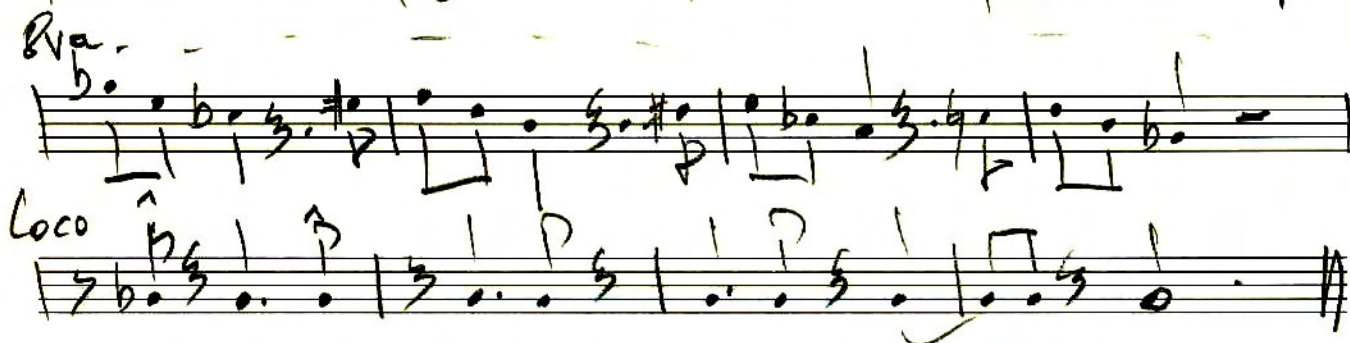
446

Whistling Swinging Bird

8va



(B)



Contive Solos

